



2010 Controlled Environments

GARMENT AND PRODUCT CATALOG
INCLUDING DUPONT™ TYVEK® ISOCLEAN® APPAREL



WHY DUPONT CONTROLLED ENVIRONMENTS?

BECAUSE you want to do everything you can to improve productivity and reduce risk in your controlled environment.

DuPont understands the cleanroom environment and continues to provide innovation and new offerings that can help ensure your controlled environment is as clean and efficient as possible. This means solutions to help you reduce the risk of contaminants in your operations—contaminants that can damage your final product quality, introduce the risk of non-compliance into your operations, and reduce your productivity.

With the DuPont Controlled Environments offering, you get the advantage of a wide range of proven, science-based solutions that help ensure superior protection for your business critical systems, equipment, production process and personnel.

If your industry standards call for sterility and/or cleanliness in pharmaceutical, biotechnology, electronics or medical device environments, DuPont limited-use apparel lines are designed to fit those needs.

DuPont offers apparel for environments where sterility and cleanliness are critical. DuPont products stand for high quality. Every garment is new, clean and fresh, so you can have peace of mind and confidence when using it.

If you have any questions, call 800.932.5000. We are more than happy to help you with your cleanroom apparel evaluation and discuss a variety of contamination control issues.

You can also visit DuPont's web site at www.ControlledEnvironments.DuPont.com

OUR SERVICE COMMITMENT

VWR and DuPont are committed to providing service-level excellence to all of our customers. This commitment includes a renewed focus on customer service, on-time delivery, sales/technical support and immediate access to product information.

Be advised that certain garments contained in this catalog description are subject to U.S. Export Control laws. Purchasing these garments subjects your company to those laws for export. For more information, contact us at 888.897.5463.

HOW TO INTERPRET PRODUCT PART NUMBERS	4
GARMENT PROCESSING & PACKAGING OPTIONS	5
HOW TO SELECT THE RIGHT GARMENTS	6
Coveralls—without hood	6
Coveralls—hooded	6
Hoods & bouffants	6
Shoe & boot covers	7
Sleeves & cuff tape	7
Frocks & lab coats	8
Aprons, gowns & smocks	8
Masks & face veils	8
GARMENTS AND PRODUCTS	9
DuPont™ Tyvek® IsoClean®	9
DuPont™ Suprel™ LS	12
DuPont™ ProClean®	13
DuPont™ Tyvek® Micro-Clean® 2-1-2	14
DuPont™ SureStep™/ DuPont™ Dura-Trac™	14
DuPont™ Sierra™	15
General purpose products	16
Sterile cleanroom gowning procedures	17
GOWN RECOMMENDATIONS	18
SIZING CHART	19
STERILE PACKAGING PROCESS	19
CATALOG NUMBER INDEX	20
STATEMENTS AND WARNINGS	28



How to interpret product part numbers

IC253BWHLG0025CS

DuPont “smart” part numbers are not just a random collection of characters. Each component of the 16-character DuPont part number has meaning. When combined, these components provide a wealth of important product information, as shown here.

IC	253	B	WH	LG	0025	CS
<p>Fabric type The first two characters are the fabric description.</p> <p>Abbreviations 99 = Accessory CC = Tyvek® Micro-Clean® 2-1-2 DE = Hydroentangled Polyester & Cellulose DT = Dura-Trac™ IC = IsoClean® ML = Sierra™ Mask PC = ProClean® PE = SureStep™ PP = Polypropylene QC = Tychem® QC SR = Suprel™ LS TY = Tyvek®</p>	<p>Garment design DuPont offers a wide array of garment styles—from hoods to frocks and coveralls. Each garment style has a unique three-digit code.</p>	<p>Seam type The final character in the base number denotes the seam construction of the garment.</p> <p>Abbreviations B = bound F = fell S = serged O = no seam</p>	<p>Color Several DuPont fabrics are available in color options; refer to catalog descriptions for details.</p> <p>Abbreviations BU = blue WH = white YL = yellow</p>	<p>Size Many DuPont garments are available in a range of sizes; refer to catalog descriptions for details.</p> <p>Abbreviations SM = small MD = medium LG = large XL = extra large 2X = 2 extra large 3X = 3 extra large 4X = 4 extra large 5X = 5 extra large OO = universal sizing</p>	<p>Case count Provides the number of garments per case; refer to catalog descriptions for details.</p>	<p>Options For example, OS designates sterilized and PI designates individually packaged. Not all option codes are available for all products; refer to catalog descriptions for details.</p> <p>Abbreviations BB = 50/box BH = 50/bag CS = Clean & Sterile CT = Conductive Strip OB = Bulk OC = Clean-Processed OO = Bulk OS = Sterile PI = Individually Packaged</p>

Garment processing & packaging options

STERILE

Clean-processed and sterile (option code CS)

Garments are specially processed to minimize particle shedding, then folded for aseptic donning and individually packaged in an ISO Class 4 cleanroom. The case quantity is packaged in a cardboard case with two polyethylene liners. Sterility is achieved by gamma irradiation. Irradiation dosage is validated in accordance with ISO 11137 for a Sterility Assurance Level (SAL) of 10^{-6} .

Sterile (option code OS)

Garments are folded for aseptic donning and individually packaged. The case quantity is packaged in a cardboard case with two polyethylene liners. Some sterile items are folded and individually packaged in an ISO Class 5 cleanroom (see garment data sheet). Sterility is achieved by gamma irradiation. Irradiation dosage is validated in accordance with ISO 11137 for a Sterility Assurance Level (SAL) of 10^{-6} .



Opaque sterile pouch packaging

NON-STERILE

Clean-processed (option code OC)

Garments are specially processed to minimize particle shedding and individually packaged in an ISO Class 4 cleanroom. The case quantity is packaged in a cardboard case with two polyethylene liners.

Individually packaged (option code PI)

Garments are individually packaged in an ISO Class 5 cleanroom. The case quantity is packaged in a cardboard case with two polyethylene liners.

Bulk (option code OB or OO)

Case quantities are packed in a cardboard case with two polyethylene liners.

NOTE: Individual packaging for shoe and boot covers indicates that each pair has its own sealed bag. Masks and cuff tapes may have subgroupings of individually packaged items within the case.

How to select the right garments

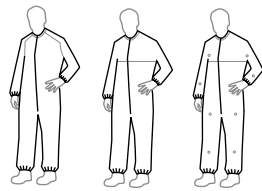
THE DUPONT CONTROLLED ENVIRONMENTS GARMENT PORTFOLIO

To help you select the right garments for your controlled environment, please select garment type, sterile or non-sterile, then select your preference for either clean-processed, bulk or individually packaged.

COVERALLS—WITHOUT HOOD

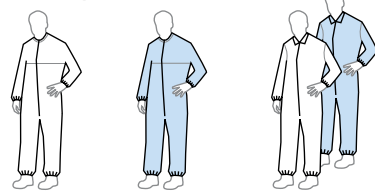
STERILE

clean



Tyvek® IsoClean® IC182 p. 9
 Tyvek® IsoClean® IC253 p. 9
 Tyvek® IsoClean® IC254 p. 9

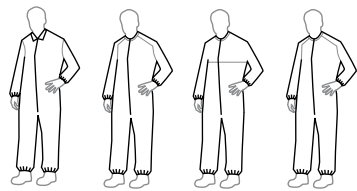
individual packages



Tyvek® IsoClean® IC253 p. 9
 Tyvek® Micro-Clean® 2-1-2 CC252 p. 14
 Suprel® LS SR181 p. 12

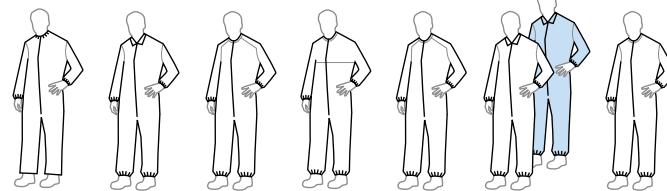
NON-STERILE

clean



Tyvek® IsoClean® IC181 p. 9
 Tyvek® IsoClean® IC182 p. 9
 Tyvek® IsoClean® IC253 p. 9
 Tyvek® IsoClean® IC258 p. 9

bulk



Tyvek® IsoClean® IC153 p. 9
 Tyvek® IsoClean® IC181 p. 9
 Tyvek® IsoClean® IC182 p. 9
 Tyvek® IsoClean® IC253 p. 9
 Tyvek® IsoClean® IC258 p. 9
 Suprel® LS SR181 p. 12
 ProClean® PC143 p. 13

individual packages



Tyvek® Micro-Clean® 2-1-2 CC252 p. 14

COVERALLS—HOODED

STERILE

clean



Tyvek® IsoClean® IC105 p. 9

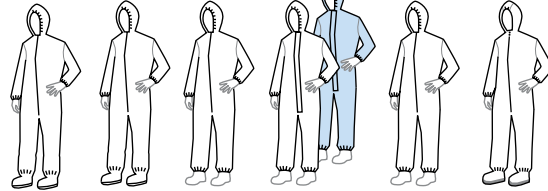
NON-STERILE

clean



Tyvek® IsoClean® IC105 p. 9

bulk



Tyvek® IsoClean® IC105 p. 9
 Tyvek® IsoClean® IC106 p. 9
 Tyvek® IsoClean® IC180 p. 10
 Suprel® LS SR144 p. 12
 Suprel® LS SR180 p. 12
 ProClean® PC122 p. 13

HOODS & BOUFFANTS

STERILE

clean



Tyvek® IsoClean® IC666 p. 10
 Tyvek® IsoClean® IC668 p. 10
 Tyvek® IsoClean® IC729 p. 10

individual packages



Suprel® LS SR663 p. 12

NON-STERILE

clean



Tyvek® IsoClean® IC666 p. 10
 Tyvek® IsoClean® IC668 p. 10
 Tyvek® IsoClean® IC729 p. 10

bulk



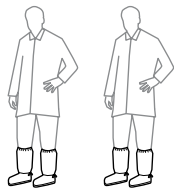
Tyvek® IsoClean® IC666 p. 10
 Tyvek® IsoClean® IC668 p. 10
 Tyvek® IsoClean® IC729 p. 10
 ProClean® PC663 p. 13

How to select the right garments

SHOE & BOOT COVERS

STERILE

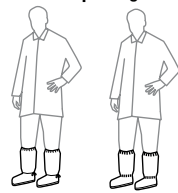
clean



Tyvek®
IsoClean®
IC446
p. 11

Tyvek®
IsoClean®
IC458
p. 11

individual packages

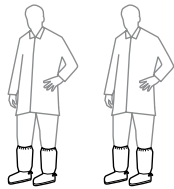


Tyvek®
IsoClean®
IC457
p. 11

Suprel® LS
SR447
p. 12

NON-STERILE

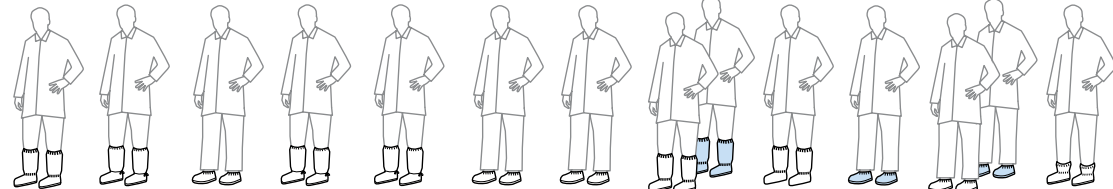
clean



Tyvek®
IsoClean®
IC446
p. 11

Tyvek®
IsoClean®
IC458
p. 11

bulk



Tyvek®
IsoClean®
IC444
p. 11

Tyvek®
IsoClean®
IC446
p. 11

Tyvek®
IsoClean®
IC451
p. 11

Tyvek®
IsoClean®
IC457
p. 11

Tyvek®
IsoClean®
IC458
p. 11

Tyvek®
IsoClean®
IC461
p. 11

Suprel® LS
SR442
p. 12

Suprel® LS
SR447
p. 12

ProClean®
PC444
p. 13

Dura-Trac™
DT440
p. 14

SureStep™
PE440
p. 14

SureStep™
PE444
p. 14

SLEEVES & CUFF TAPE

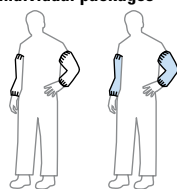
STERILE

clean



Tyvek®
IsoClean®
IC501
p. 10

individual packages



Tyvek®
IsoClean®
IC501
p. 10

gen. purpose
DE500
p. 16



Tyvek®
IsoClean®
99479
p. 11

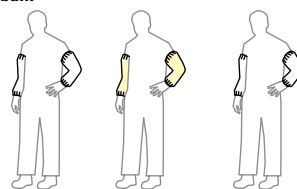
NON-STERILE

clean



Tyvek®
IsoClean®
IC501
p. 10

bulk



Tyvek®
IsoClean®
IC501
p. 10

gen. purpose
QC500
p. 16

ProClean®
PC500
p. 13

How to select the right garments

THE DUPONT CONTROLLED ENVIRONMENTS GARMENT PORTFOLIO

To help you select the right garments for your controlled environment, please select garment type, sterile or non-sterile, then select your preference for either clean-processed, bulk or individually packaged.

FROCKS & LAB COATS

STERILE

clean



Tyvek®
IsoClean®
IC270
p. 10

individual packages



Tyvek®
IsoClean®
IC262
p. 10



Suprel™ LS
SR267
p. 12



Suprel™ LS
SR271
p. 12

NON-STERILE

clean



Tyvek®
IsoClean®
IC270
p. 10

bulk



Tyvek®
IsoClean®
IC224
p. 10



Tyvek®
IsoClean®
IC262
p. 10



Tyvek®
IsoClean®
IC263
p. 10



Tyvek®
IsoClean®
IC264
p. 10



Tyvek®
IsoClean®
IC270
p. 10



Suprel™ LS
SR219
p. 12



Suprel™ LS
SR267
p. 12



Suprel™ LS
SR271
p. 12



ProClean®
PC270
p. 13



ProClean®
PC271
p. 13

APRONS, GOWNS & SMOCKS

NON-STERILE

bulk



gen. purpose
TY273
p. 16



Tyvek®
IsoClean®
IC226
p. 10



Tyvek®
IsoClean®
IC701
p. 10



Tyvek®
IsoClean®
IC704
p. 10



gen. purpose
PP701
p. 16

MASKS & FACE VEILS

STERILE

individual packages



Tyvek®
IsoClean®
IC731
p. 11



Sierra™
ML730
p. 15



Sierra™
ML736
p. 15



Sierra™
ML737
p. 15

NON-STERILE

individual packages



Sierra™
ML730
p. 15



Sierra™
ML731
p. 15



Sierra™
ML733
p. 15



Sierra™
ML736
p. 15



Sierra™
ML737
p. 15



Sierra™
ML739
p. 15



gen. purpose
PP740
p. 16



gen. purpose
PP741
p. 16

DuPont™ Tyvek® IsoClean®

NOTE: Please substitute your size for ## when ordering. See p. 4 for full part number description.

coverall

IC253BWH##0025CS
IC253BWH##0025OB
IC253BWH##0025OC
IC253BWH##0025OS
 bound seams
 bound neck
 dolman sleeve
 covered elastic wrist, ankle
 zipper closure
 white
 25/cs
 SM, MD, LG, XL, 2X, 3X, 4X, 5X



coverall

IC182BWH##0025CS
IC182BWH##0025OC
IC182BWH##0025OO
 bound seams
 bound neck
 raglan sleeve
 covered elastic wrist, ankle
 zipper closure
 white
 25/cs
 SM, MD, LG, XL, 2X, 3X, 4X



coverall

IC254BWH##0025CS
 bound seams
 bound neck
 dolman sleeve
 covered elastic wrist, ankle
 zipper closure
 snaps for aseptic donning
 white
 25/cs
 SM, MD, LG, XL, 2X, 3X, 4X



coverall

IC153BWH##0025OO
 bound seams
 elastic neck
 set sleeve
 covered elastic wrist
 zipper closure
 white
 25/cs
 MD, LG, XL, 2X



coverall

IC258SWH##0025OB
IC258SWH##0025OC
 serged seams
 bound neck
 raglan sleeve
 elastic wrist, ankle
 zipper closure
 white
 25/cs
 SM, MD, LG, XL, 2X, 3X, 4X



coverall

IC181SWH##0025OO
IC181SWH##0025OC
 serged seams
 standard collar
 set sleeve
 elastic wrist, ankle
 zipper closure
 white
 25/cs
 SM, MD, LG, XL, 2X, 3X, 4X



coverall

IC105SWH##0025CS
IC105SWH##0025OC
IC105SWH##0025OO
 serged seams
 standard hood
 elastic hood opening
 set sleeve
 elastic wrist, ankle
attached thumb loops
 zipper closure
 attached boots with PVC soles
 white
 25/cs
 MD, LG, XL, 2X, 3X



coverall

IC106SWH##0025OO
 serged seams
 standard hood
 elastic hood opening
 set sleeve
 elastic wrist, ankle
 zipper closure
 attached boots with slip-resistant
 Gripper™ PVC soles
 white
 25/cs
 MD, LG, XL, 2X, 3X



hood: **IC668B**
 coverall: **IC181S**

DuPont™ Tyvek® IsoClean®

- Made from DuPont™ Tyvek® brand flashspun polyolefin protective material
- Unique, patented flashspinning process creates an excellent barrier to dry particles, microorganisms and non-hazardous liquids
- Comfortable, lightweight and durable
- Clean-processed garments offer lowest level of particle shedding within DuPont product portfolio
- Garments available gamma sterilized to an SAL of 10⁻⁶
- Serged or bound seams with covered elastic options
- Bound seam garments offer highest particle barrier within DuPont product portfolio
- Full traceability on all sterilized apparel
- Recyclable
- Gripper™ soles offer a higher level of slip resistance than standard PVC soles

PART NUMBER GUIDE

IC	253	B	WH	LG	0025	CS
fabric type	garment design	seam type	color	size	case count	options

NOTE: All sizes not available in all styles. For universal sizing use 00 in the part number. Seams and closures have less barrier than fabric.

WARNING: Cleanroom apparel should not be used around heat, flames, sparks or in potentially flammable or explosive environments. Cleanroom fabrics should have slip-resistant materials on the outer sole of boots, shoe covers or other garment surfaces in conditions where slipping could occur.

CHOOSE FROM THESE OPTIONS:

- **CS** = Clean and Sterile: clean-processed, individually packaged and sterilized by gamma irradiation
- **OS** = Sterile: individually packaged and sterilized by gamma irradiation
- **OC** = Clean: clean-processed, individually packaged
- **OO** or **OB** = Bulk packaged
- **PI** = Individually packaged in an opaque bag

NOTE: Please substitute your size for ## when ordering. See p. 4 for full part number description.

coverall

IC180SWH##002500

serged seams
standard hood
elastic hood opening
set sleeve
elastic wrist, ankle
zipper closure
white
25/cs
MD, LG, XL, 2X, 3X



frock

IC270BWH##0030CS
IC270BWH##00300C
IC270BWH##003000

bound seams
bound neck
set sleeve
covered elastic wrist
snap closure (6 + 1 adjustable)
white
30/cs
SM, MD, LG, XL, 2X, 3X, 4X



frock

IC262SWH##00300B
IC262SWH##00300S

serged seams
high mandarin collar w/ adjustable snaps
raglan sleeve
elastic wrist
snap closure (6)
generous cut
white
30/cs
SM, MD, LG, XL, 2X, 3X, 4X for OB option
MD, LG, XL, 2X, 3X for OS option



frock

IC263SWH##00300B

serged seams
high mandarin collar w/snap
set sleeve
elastic wrist
snap closure (6)
white
30/cs
SM, MD, LG, XL, 2X, 3X, 4X



frock

IC264SWH##00300B

serged seams
bound neck
raglan sleeve
elastic wrist
zipper closure
a-line
white
30/cs
SM, MD, LG, XL, 2X



lab coat

IC224SWH##00300B

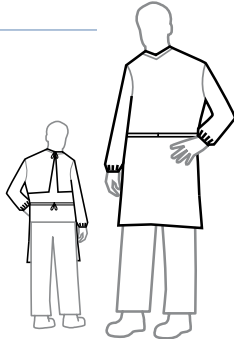
serged seams
laydown collar
raglan sleeve
snap closure (5)
pockets (1 chest pencil, 2 lower front)
white
30/cs
SM, MD, LG, XL, 2X



apron

IC704SWH0000300B

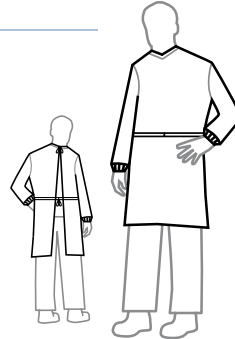
serged seams
bound neck
set sleeve
elastic wrist
ties at neck & waist
(ties from center front)
lamine in apron
white
30/cs
universal sizing (00)



gown

IC701SWH##003000

serged seams
bound neck w/ties
knit cuff
bound ties originating at center
front waist
white
30/cs
universal sizing (00)



smock

IC226SWH##00300B

serged seams
bound neck
set sleeve
elastic wrist
wrap around (ties at waist)
pockets (1 chest pencil, 2 lower front)
white
30/cs
SM, MD, LG, XL



sleeves

IC501BWH000100CS
IC501BWH0001000B
IC501BWH0001000C
IC501BWH0001000S

bound seams
covered elastic wrist, bicep
18" length
white
100/cs
universal sizing (00)



bouffant

IC729SWH000250CS
IC729SWH0002500B
IC729SWH0002500C

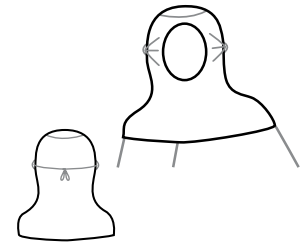
serged seams
elastic headband
21.5" diameter
white
250/cs
universal sizing (00)



hood

IC668BWH000100CS
IC668BWH0001000B
IC668BWH0001000C

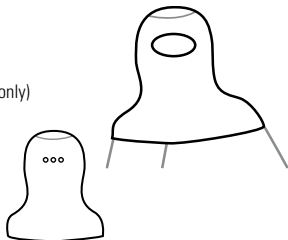
bound seams
full face opening
bound hood opening
ties with loops for fit
white
100/cs
universal sizing (00)



hood

IC666BWH##0100CS
IC666BWH##01000C
IC666BWH##010000

bound seams
bound hood opening (eyes only)
snaps for fit
bound bottom
white
100/cs
MD, LG



mask

IC7310BU0003000S

bound Tyvek® ties
 pleated
 polyethylene outer
 PBT filter
 metal nose piece
 blue
 300/cs
 7"
 universal sizing (00)



cuff tape

994790WH0004000S

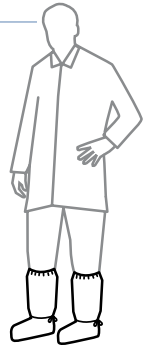
made of Tyvek® IsoClean®
 20" long x 3" wide
 white
 400/cs
 universal sizing (00)



boot cover

IC458BWH##0100CS
IC458BWH##0100OB
IC458BWH##0100OC

bound seams
 covered elastic opening
 ties at ankle
 Gripper® sole
 18" high
 white
 100/cs
 MD, LG, XL



boot cover

IC446SWH##0100CS
IC446SWH##0100OC
IC446SWH##0100OO

serged seams
 elastic opening
 bound Tyvek® ties at ankle
 Gripper® sole
 18" high
 white
 100/cs
 MD, LG, XL



boot cover

IC457SWH##0100OB
IC457SWH##0100OS

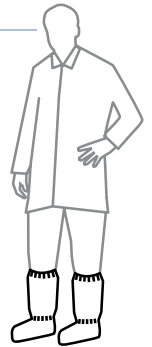
serged seams
 elastic opening
 ties at ankle
 PVC sole
 18" high
 white
 100/cs
 SM, MD, LG, XL



boot cover

IC444SWH##0200OB

serged seams
 elastic opening
 elastic ankle
 PVC sole
 15" high
 white
 200/cs
 MD, LG, XL



shoe cover

IC451SWH##0100OB

serged seams
 elastic opening
 Gripper® sole
 5" high
 white
 100/cs
 MD, LG, XL



shoe cover

IC461SWH##0300OB

serged seams
 elastic opening
 PVC sole
 elastic toe
 5" high
 white
 300/cs
 SM, MD, LG, XL



PART NUMBER GUIDE

IC	253	B	WH	LG	0025	CS
fabric type	garment design	seam type	color	size	case count	options

NOTE: All sizes not available in all styles. For universal sizing use 00 in the part number.

Seams and closures have less barrier than fabric.

WARNING: Cleanroom apparel should not be used around heat, flames, sparks or in potentially flammable or explosive environments. Cleanroom fabrics should have slip-resistant materials on the outer sole of boots, shoe covers or other garment surfaces in conditions where slipping could occur.

DuPont™ Suprel™ LS

NOTE: Please substitute your size for ## when ordering. See p. X for full part number description.



coverall:
SR180S

DuPont™ Suprel™ LS

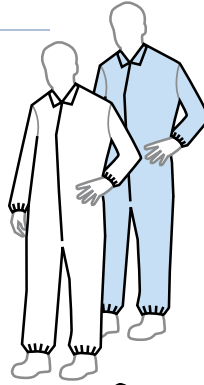
- Patented bi-component fabric based on DuPont Advanced Composite Technology™
- Superior balance of breathability and barrier protection
- Soft feel for exceptional comfort
- Greater ease of movement
- Serged seams
- Garments available gamma sterilized to an SAL of 10⁻⁶
- Full traceability on all sterilized apparel
- Gripper™ soles offer a higher level of slip resistance than standard PVC soles
- Available in blue and white

CHOOSE FROM THESE OPTIONS:

- **OS** = Sterile: individually packaged by gamma irradiation
- **OO** = Bulk packaged

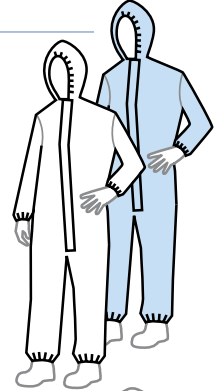
coverall

SR181SBU##002500
SR181SWH##002500
SR181SWH##00250S
 serged seams
 laydown collar
 set sleeve
 elastic wrist, ankle
 zipper closure
 white, blue
 25/cs
 SM, MD, LG, XL, 2X, 3X, 4X



coverall

SR144BBU##002500
SR144BWH##002500
 bound seams
 standard hood
 covered elastic hood opening
 set sleeve
 covered elastic wrist, ankle
 zipper closure with storm flap
 storm flap with tape
 white, blue
 25/cs
 SM, MD, LG, XL, 2X, 3X, 4X, 5X



coverall

SR180SWH##002500
 serged seams
 standard hood
 elastic hood opening
 set sleeve
 elastic wrist, ankle
 zipper closure
 white
 25/cs
 SM, MD, LG, XL, 2X, 3X, 4X



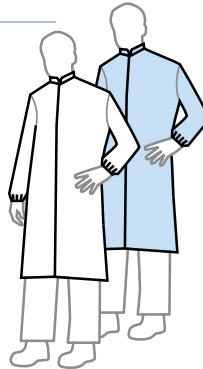
frock

SR267SWH##003000
SR267SWH##00300S
 serged seams
 mandarin collar
 set sleeve
 knit cuff
 covered elastic wrist
 snap closure (6 + 1 adjustable)
 white
 30/cs
 SM, MD, LG, XL, 2X, 3X, 4X



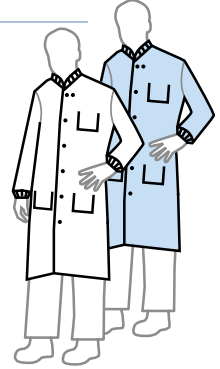
frock

SR271SBU##003000
SR271SWH##003000
SR271SWH##00300S
 serged seams
 mandarin collar
 covered elastic wrist
 zipper closure
 white, blue
 30/cs
 SM, MD, LG, XL, 2X, 3X, 4X



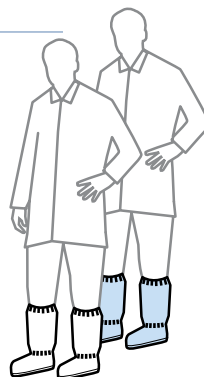
lab coat

SR219SBU##003000
SR219SWH##003000
 serged seams
 knit collar
 set sleeve
 knit cuff
 snap closure (6 + 1 adjustable)
 pockets (1 left chest pencil,
 2 lower front)
 white, blue
 30/cs
 SM, MD, LG, XL, 2X, 3X, 4X



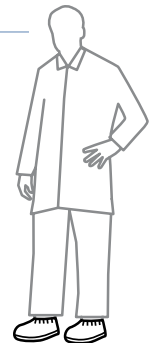
boot cover

SR447SBU##010000
SR447SWH##010000
SR447SWH##01000S
 serged seams
 elastic opening
 elastic ankle
 Gripper™ sole
 18" height
 white, blue
 100/cs
 MD, LG, XL



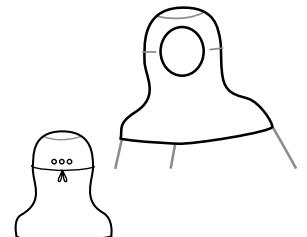
shoe cover

SR442SWH##010000
 serged seams
 elastic opening
 Gripper™ sole
 2.5" height
 white
 100/cs
 MD, LG, XL



hood

SR663BWH0001000S
 bound seams
 full face
 bound hood opening
 snaps for fit
 bound bottom & ties
 white
 100/cs
 universal sizing (OO)



PART NUMBER GUIDE

IC	253	B	WH	LG	0025	CS
fabric type	garment design	seam type	color	size	case count	options*

NOTE: All sizes not available in all styles. For universal sizing use OO in the part number. Seams and closures have less barrier than fabric.

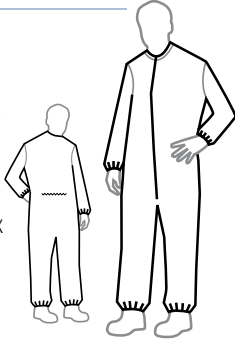
WARNING: Cleanroom apparel should not be used around heat, flames, sparks or in potentially flammable or explosive environments. Cleanroom fabrics should have slip-resistant materials on the outer sole of boots, shoe covers or other garment surfaces in conditions where slipping could occur.

NOTE: Please substitute your size for ## when ordering. See p. 4 for full part number description.

coverall

PC143SWH##00250B

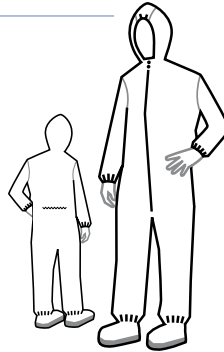
serged seams
bound neck
set sleeve
covered elastic wrist, ankle
zipper closure
enclosed elastic at back
white
25/cs
SM, MD, LG, XL, 2X, 3X, 4X



coverall

PC122SWH##00250B

serged seams
attached hood
covered elastic gusset with
bound face opening
set sleeve
covered elastic wrist, ankle
zipper closure
enclosed elastic at back
attached boots with
slip-resistance covers
white
25/cs
SM, MD, LG, XL, 2X, 3X, 4X



frock

PC270SWH##00300B

serged seams
bound neck
set sleeve
covered elastic wrist
snaps (5)
white
30/cs
SM, MD, LG, XL, 2X, 3X, 4X



frock

PC271SWH##00300B

serged seams
bound neck
set sleeve
covered elastic wrist
zipper closure
white
30/cs
SM, MD, LG, XL, 2X, 3X, 4X



sleeve

PC500SWH002000B

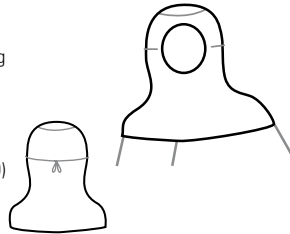
serged seams
covered elastic wrist, bicep
18" length
white
100/cs
universal sizing (00)



hood

PC663SWH001000S

serged seams
full face
bound hood opening
bound ties
bound bottom
white
100/cs
universal sizing (00)



boot cover

PC444SWH##01000B

serged seams
covered elastic opening
elastic ankle
PVC sole
18" height
white
100/cs
MD, LG, XL



coverall:
PC122S

DuPont™ ProClean®

- Microporous composite fabric
- Non-hazardous liquid and dry particulate barrier protection for cleanroom applications
- Serged seams

CHOOSE FROM THIS OPTION:

- **OS** = Sterile: individually packaged by gamma irradiation
- **OB** = Bulk packaged

PART NUMBER GUIDE

IC	253	B	WH	LG	0025	CS
fabric type	garment design	seam type	color	size	case count	options

NOTE: All sizes not available in all styles. For universal sizing use 00 in the part number.
Seams and closures have less barrier than fabric.

WARNING: Cleanroom apparel should not be used around heat, flames, sparks or in potentially flammable or explosive environments. Cleanroom fabrics should have slip-resistant materials on the outer sole of boots, shoe covers or other garment surfaces in conditions where slipping could occur.

DuPont™ Tyvek® Micro-Clean® 2-1-2

NOTE: Please substitute your size for ## when ordering. See p. 4 for full part number description.



coverall:
CC252B

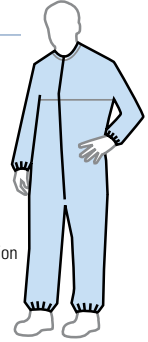
DuPont™ Tyvek® Micro-Clean® 2-1-2

- Made from DuPont™ Tyvek® brand flashspun protective material
- Unique, patented flashspinning process creates an excellent barrier to dry particles and microorganisms
- Coated on both sides with proprietary 2-1-2 blue polymeric resin
- Antistatic treated
- Outstanding particle filtration efficiency
- Garments available gamma sterilized to an SAL of 10⁻⁶
- Cloth-like aesthetics
- Full traceability on all sterilized apparel

coverall

CC252BBU##00250S
CC252BBU##0025PI

bound seams
bound neck with loop at center back
dolman sleeve
covered elastic wrist, ankle
zipper closure
blue
25/cs
SM, MD, LG, XL, 2X, 3X, 4X, 5X for OS option
SM, MD, LG, XL, 2X, 3X, 4X for PI option



CHOOSE FROM THESE OPTIONS:

- **OS** = Sterile: individually packaged and sterilized by gamma irradiation
- **PI** = Individually packaged in opaque bag

DuPont™ SureStep™ / DuPont™ Dura-Trac™



shoe cover:
PE440S

DuPont™ SureStep™ / DuPont™ Dura-Trac™

- Spunbonded polypropylene with polyethylene film coating
- High slip resistance both wet and dry
- Low linting, resists delamination
- SureStep™ available with a conductive strip

CHOOSE FROM THESE OPTIONS:

- **OO, OB** = Bulk packaged
- **CT** = Conductive strip

boot cover

PE444SWH##010000

serged seams
elastic opening
elastic ankle
13" height
white
100/cs
LG, XL



shoe cover

PE440SBU##020000

PE440SWH##0200CT

PE440SWH##020000

serged seams
elastic opening
5.5" height
white, blue
200/cs
LG, XL



shoe cover

DT440SBU##03000B

serged seams
elastic opening
elastic toe, heel
6.5" height
blue
300/cs
LG, XL



PART NUMBER GUIDE

IC	253	B	WH	LG	0025	CS
fabric type	garment design	seam type	color	size	case count	options

NOTE: All sizes not available in all styles.

Seams and closures have less barrier than fabric.

WARNING: Cleanroom apparel should not be used around heat, flames, sparks or in potentially flammable or explosive environments. Cleanroom fabrics should have slip-resistant materials on the outer sole of boots, shoe covers or other garment surfaces in conditions where slipping could occur.

NOTE: Please substitute your size for ## when ordering. See p. 4 for full part number description.

controlled environment mask

ML7360WH000250BH
ML7360WH000250OS

9" size
bound Tyvek® ties
pleated
rayon outer facing
metal nose piece
white
250/cs
universal sizing (00)



anti-fog mask

ML7370WH000250BH
ML7370WH000250OS

9" size
bound Tyvek® ties
pleated
rayon outer facing
metal nose piece
adhesive at nose
white
250/cs
universal sizing (00)



anti-fog mask

ML7300WH000250BB
ML7300WH000250BH
ML7300WH000250OS

7" size
bound Tyvek® ties
pleated
rayon outer facing
metal nose piece
adhesive at nose
white
250/cs
universal sizing (00)



controlled environment mask

ML7390WH000300BH

7" size
bound Tyvek® ties
pleated
rayon outer facing
metal nose piece
white
300/cs
universal sizing (00)



comfort mask

ML7310BU000300BB

7" size
bound polypropylene ties
pleated
rayon outer facing
metal nose piece
blue
300/cs
universal sizing (00)



general mask

ML7330BU000300BB
ML7330BU000500BH

7" size
stretch ear loops
pleated
polypropylene outer facing
metal nose piece
blue
300 & 500/cs
universal sizing (00)



mask:
ML7360

DuPont™ Sierra™

- Excellent balance of bacteria and particle filtration efficiency and breathability
- Available in 7" and 9" sizes
- Available in blue and white

CHOOSE FROM THESE OPTIONS:

- **OS** = Sterile: individually packaged by gamma irradiation
- **BB** = 50/box
- **BH** = 50/bag

PART NUMBER GUIDE

IC	253	B	WH	LG	0025	CS
fabric type	garment design	seam type	color	size	case count	options

NOTE: For universal sizing use 00 in the part number.

Nor for respiratory protection.

WARNING: Cleanroom apparel should not be used around heat, flames, sparks or in potentially flammable or explosive environments. Cleanroom fabrics should have slip-resistant materials on the outer sole of boots, shoe covers or other garment surfaces in conditions where slipping could occur.

General purpose products

NOTE: Please substitute your size for ## when ordering. See p. X for full part number description.

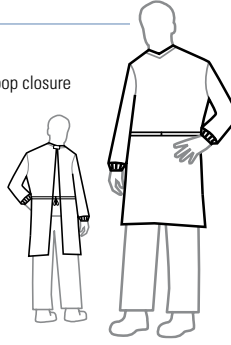


apron:
TY273B

gown

PP701FWH0005000

- fell seams
- bound neck w/ hook and loop closure
- knit cuff
- bound ties at waist
- polyethylene-coated front
- breathable back
- white
- 50/cs
- universal sizing (00)



apron

TY273BWH00010000

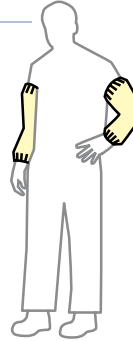
- bound seams
- bound neck
- ties closure
- Tyvek® ties at waist
- white
- 100/cs
- universal sizing (00)



sleeve

QC500BYL002000B

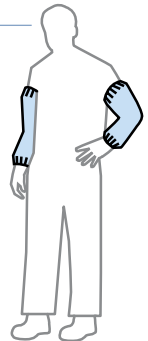
- bound seams
- tunneled elastic wrist
- Tychem® QC
- 18" length
- yellow
- 200/cs
- universal sizing (00)



sleeve

DE500SBU0001000S

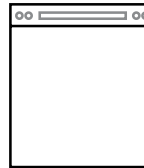
- serged seams
- covered elastic wrist and bicep
- hydroentangled polyester and cellulose
- 18" length
- blue
- 100/cs
- universal sizing (00)



cleanroom face veil

PP7400WH000150BH

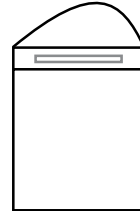
- stainless steel snaps
- metal nose piece
- white
- 150/cs
- universal sizing (00)



cleanroom face veil

PP7410WH000150BH

- elastic head band
- metal nose piece
- white
- 150/cs
- universal sizing (00)



PART NUMBER GUIDE

IC	253	B	WH	LG	0025	CS
fabric type	garment design	seam type	color	size	case count	options*

NOTE: For universal sizing use 00 in the part number.

Seams and closures have less barrier than fabric.

WARNING: Cleanroom apparel should not be used around heat, flames, sparks or in potentially flammable or explosive environments. Cleanroom fabrics should have slip-resistant materials on the outer sole of boots, shoe covers or other garment surfaces in conditions where slipping could occur.

Sterile Cleanroom Gowning Procedure

Step 1: Pre-entry



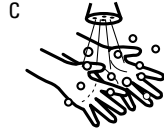
Bouffant/Hair Net
Be sure to contain all hair.



Shoe Covers
Contain all laces and tassels.



Step 2: Gowning



Wash hands using bactericidal soap and dry thoroughly.



First Sterile Gloves
Follow aseptic technique by touching only the inside of gloves. Sanitize.



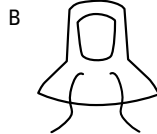
Sanitize gloves after donning each article, if required.



Step 3



Mask
Adjust for a snug facial fit. May be worn over or under hood.



Hood
Ensure snug fit and proper neck seal.

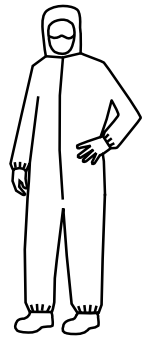
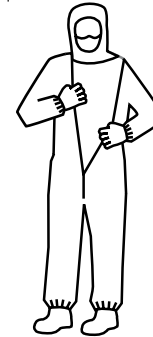


Step 4

A Coverall
Carefully remove coverall from package by holding the inside neck area. Unfold garment while preventing it from touching the floor, your clothes or bench. Please exercise care when inserting leg to ensure donning snaps (if used) release and foot clears elastic ankle prior to transferring weight.



B
Don using aseptic technique.

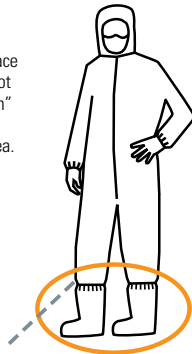


Step 5

A Boot Covers
Put boots (high-top shoe covers) on using aseptic technique. Tuck coverall legs into boots. The first boot donned can now be placed in the "clean" side of gowning area.



B
Don second boot and place the other foot in the "clean" side of the gowning area.



Step 6

A Goggles
Adjust for a snug facial fit.



B Second Sterile Gloves
Complete gowning steps by aseptically donning second pair of sterile gloves over the first pair, making sure the cuffs are securely over the sleeves.



C
Perform a final inspection in gowning room mirror prior to entry into the sterile cleanroom.



Removal of Sterile Garments

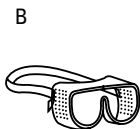
Enter gowning area from cleanroom and head directly to the "exit gown room" (preferred method).

If no "exit gown room" is available, go directly to the "non-clean" side, usually divided by a bench and/or line.

Remove items in reverse order of gowning procedure and discard.



Outer Gloves



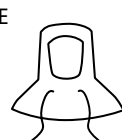
Goggles



Boot Covers



Coveralls



Hood



Mask



Inner Gloves



Bouffant/Hair Net



Shoe Covers

These are recommendations only. Gowning procedures may vary by protocol or company.

Gown recommendations

SEAM CONSTRUCTION

Even the best protective fabrics are useless without strong, tight seams.



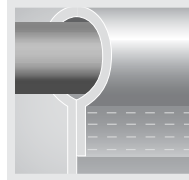
Serged or sewn

A seam produced when three threads are interlocked around the raw edges of two pieces of material for a strong, stress-resistant seam.



Bound

Tightly sewn with a reinforced outer binding to increase seam strength and barrier. For potential misting exposure of non-hazardous liquids or particle penetration through the seam.



Covered elastic

Elastic covered by garment material so elastic is not exposed.

ISO 16644-1 AIR CLEANLINESS CLASSES FOR CLEANROOMS AND CLEAN ZONES

ISO Classification Number	0.1 µm	0.2 µm	0.3 µm	0.5 µm	1.0 µm	5.0 µm	SI	English Former FED-STD-209E
ISO Class 1	10	2						
ISO Class 2	100	24	10	4				
ISO Class 3	1000	237	102	35	8		M 1.5	1
ISO Class 4	10000	2370	1020	352	83		M 2.5	10
ISO Class 5	100000	23700	10200	3520	832	29	M 3.5	100
ISO Class 6	1000000	237000	102000	35200	8320	293	M 4.5	1000
ISO Class 7				352000	83200	2930	M 5.5	10000
ISO Class 8				3520000	832000	29300	M 6.5	100000
ISO Class 9				35200000	8320000	293000		

MINIMUM GOWNING RECOMMENDATIONS

	ISO Class 8 (Class 100,000)	ISO Class 7 (Class 10,000)	ISO Class 6 (Class 1,000)	ISO Class 5 (Class 100)	ISO Class 4 (Class 10)
Hair cover	•	•	•	•	•
Hood				•	•
Face mask				•	•
Frock	•	•			
Coverall			•	•	•
Shoe covers	•	•			
Boots			•	•	•

IEST-RP-CC-003.3

Sizing chart

SIZING CHART FOR DUPONT CONTROLLED ENVIRONMENTS GARMENTS

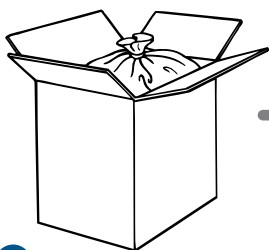
Use this chart to determine what size garment is right for you. Sizes are based on an individual's height and chest size.

		H E I G H T													
		5'0"	5'2"	5'4"	5'6"	5'8"	5'10"	6'0"	6'2"	6'4"	6'6"	6'8"	6'10"	7'0"	7'2">
C H E S T	32"														
	34"														
	36"														
	38"														
	40"														
	42"														
	44"														
	46"														
	48"														
	50"														
	52"														
	54"														
	56"														
	58"														
	60"														
	62"														
64"															

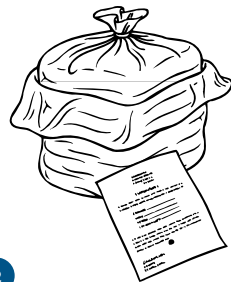
S I Z E S	
	Small
	Medium
	Large
	X-large
	2X-large
	3X-large
	4X-large
	5X-large

Sterile packaging process

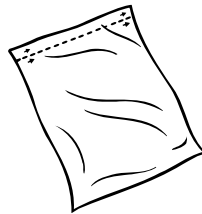
CRITICAL ASSURANCE STERILE APPAREL MULTI-LEVEL PACKAGING



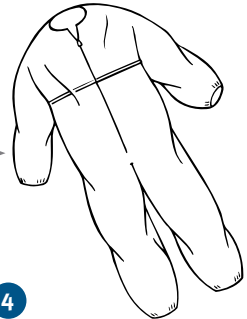
1 Outer shipping carton is securely sealed. Carton displays product label, sterile dot indicator and fully traceable lot number.



2 Multilevel interior packaging features one or two polyethylene carton liners secured with twist ties. The outer liner provides protection from dust and contamination, particularly if outer carton is discarded. A lot-specific Certificate of Compliance with sterile dot indicator is placed between the two liners. The inner liner allows transportation of product to a cleaner, more controlled environment.



3 Completely heat sealed, airtight individual garment opaque bag is made from durable polyethylene film and features a varnish-coated ink, easy-to-open linear-tear and embossed lot number.



4 Sterile garment consistently folded and packaged to ease aseptic donning. Traceable lot numbers are stamped on each individual sterile garment.

Catalog Number Index

DuPont® Catalog #	VWR Catalog #	Description	Page #
994790WH0004000S	89127-142	DuPont™ Tyvek® IsoClean® Cuff Tape	11
CC252BBUSM0025OS	89127-160	DuPont™ Tyvek® Micro-Clean® 2-1-2 Coverall	14
CC252BBUMD0025OS	89129-592	DuPont™ Tyvek® Micro-Clean® 2-1-2 Coverall	14
CC252BBULG0025OS	89127-154	DuPont™ Tyvek® Micro-Clean® 2-1-2 Coverall	14
CC252BBUXL0025OS	89127-164	DuPont™ Tyvek® Micro-Clean® 2-1-2 Coverall	14
CC252BBU2X0025OS	89129-588	DuPont™ Tyvek® Micro-Clean® 2-1-2 Coverall	14
CC252BBU3X0025OS	89127-146	DuPont™ Tyvek® Micro-Clean® 2-1-2 Coverall	14
CC252BBU4X0025OS	89127-150	DuPont™ Tyvek® Micro-Clean® 2-1-2 Coverall	14
CC252BBU5X0025OS	89129-590	DuPont™ Tyvek® Micro-Clean® 2-1-2 Coverall	14
CC252BBUSM0025PI	89127-162	DuPont™ Tyvek® Micro-Clean® 2-1-2 Coverall	14
CC252BBUMD0025PI	89127-158	DuPont™ Tyvek® Micro-Clean® 2-1-2 Coverall	14
CC252BBULG0025PI	89127-156	DuPont™ Tyvek® Micro-Clean® 2-1-2 Coverall	14
CC252BBUXL0025PI	89127-166	DuPont™ Tyvek® Micro-Clean® 2-1-2 Coverall	14
CC252BBU2X0025PI	89127-144	DuPont™ Tyvek® Micro-Clean® 2-1-2 Coverall	14
CC252BBU3X0025PI	89127-148	DuPont™ Tyvek® Micro-Clean® 2-1-2 Coverall	14
CC252BBU4X0025PI	89127-152	DuPont™ Tyvek® Micro-Clean® 2-1-2 Coverall	14
DE500SBU0001000S	80076-722	General Purpose Sleeve	16
DT440SBULG0300OB	89127-168	DuPont™ Tyvek® Micro-Clean® 2-1-2 Shoe Cover	14
DT440SBUXL0300OB	89127-170	DuPont™ Tyvek® Micro-Clean® 2-1-2 Shoe Cover	14
IC105SWHMD0025CS	89127-178	DuPont™ Tyvek® IsoClean® Coverall	9
IC105SWHLG0025CS	89127-176	DuPont™ Tyvek® IsoClean® Coverall	9
IC105SWHXL0025CS	89129-614	DuPont™ Tyvek® IsoClean® Coverall	9
IC105SWH2X0025CS	89127-172	DuPont™ Tyvek® IsoClean® Coverall	9
IC105SWH3X0025CS	89127-174	DuPont™ Tyvek® IsoClean® Coverall	9
IC105SWHMD0025OC	89129-608	DuPont™ Tyvek® IsoClean® Coverall	9
IC105SWHLG0025OC	89129-604	DuPont™ Tyvek® IsoClean® Coverall	9
IC105SWHXL0025OC	89129-612	DuPont™ Tyvek® IsoClean® Coverall	9
IC105SWH2X0025OC	89129-596	DuPont™ Tyvek® IsoClean® Coverall	9
IC105SWH3X0025OC	89129-600	DuPont™ Tyvek® IsoClean® Coverall	9
IC105SWMD0025OO	89129-606	DuPont™ Tyvek® IsoClean® Coverall	9
IC105SWHLG0025OO	89129-602	DuPont™ Tyvek® IsoClean® Coverall	9
IC105SWHXL0025OO	89129-610	DuPont™ Tyvek® IsoClean® Coverall	9
IC105SWH2X0025OO	89129-594	DuPont™ Tyvek® IsoClean® Coverall	9
IC105SWH32X0025OO	89129-598	DuPont™ Tyvek® IsoClean® Coverall	9
IC106SWHMD0025OO	89127-186	DuPont™ Tyvek® IsoClean® Coverall	9
IC106SWHLG0025OO	89127-184	DuPont™ Tyvek® IsoClean® Coverall	9
IC106SWHXL0025OO	89125-610	DuPont™ Tyvek® IsoClean® Coverall	9
IC106SWH2X0025OO	89127-180	DuPont™ Tyvek® IsoClean® Coverall	9
IC106SWH3X0025OO	89127-182	DuPont™ Tyvek® IsoClean® Coverall	9
IC153BWHMD0025OO	89129-620	DuPont™ Tyvek® IsoClean® Coverall	9
IC153BWHLG0025OO	89129-618	DuPont™ Tyvek® IsoClean® Coverall	9
IC153BWHXL0025OO	89129-622	DuPont™ Tyvek® IsoClean® Coverall	9
IC153BWH2X0025OO	89129-616	DuPont™ Tyvek® IsoClean® Coverall	9
IC180SWHMD0025OO	89129-624	DuPont™ Tyvek® IsoClean® Coverall	10
IC180SWHLG0025OO	80017-178	DuPont™ Tyvek® IsoClean® Coverall	10
IC180SWHXL0025OO	80017-176	DuPont™ Tyvek® IsoClean® Coverall	10
IC180SWH2X0025OO	80077-174	DuPont™ Tyvek® IsoClean® Coverall	10
IC180SWH3X0025OO	80077-172	DuPont™ Tyvek® IsoClean® Coverall	10
IC181SWHSM0025OC	80076-786	DuPont™ Tyvek® IsoClean® Coverall	9
IC181SWHMD0025OC	80076-788	DuPont™ Tyvek® IsoClean® Coverall	9
IC181SWHLG0025OC	80076-790	DuPont™ Tyvek® IsoClean® Coverall	9
IC181SWHXL0025OC	80076-792	DuPont™ Tyvek® IsoClean® Coverall	9

Catalog Number Index

DuPont® Catalog #	VWR Catalog #	Description	Page #
IC181SWH2X00250C	80076-794	DuPont™ Tyvek® IsoClean® Coverall	9
IC181SWH3X00250C	80076-796	DuPont™ Tyvek® IsoClean® Coverall	9
IC181SWH4X00250C	89129-626	DuPont™ Tyvek® IsoClean® Coverall	9
IC181SWHSM002500	80076-744	DuPont™ Tyvek® IsoClean® Coverall	9
IC181SWHMD002500	80076-746	DuPont™ Tyvek® IsoClean® Coverall	9
IC181SWHLG002500	80076-748	DuPont™ Tyvek® IsoClean® Coverall	9
IC181SWHXL002500	80076-750	DuPont™ Tyvek® IsoClean® Coverall	9
IC181SWH2X002500	80076-752	DuPont™ Tyvek® IsoClean® Coverall	9
IC181SWH3X002500	80076-948	DuPont™ Tyvek® IsoClean® Coverall	9
IC181SWH4X002500	80077-288	DuPont™ Tyvek® IsoClean® Coverall	9
IC182BWHSM0025CS	80076-834	DuPont™ Tyvek® IsoClean® Coverall	9
IC182BWHMD0025CS	80076-836	DuPont™ Tyvek® IsoClean® Coverall	9
IC182BWHLG0025CS	80076-838	DuPont™ Tyvek® IsoClean® Coverall	9
IC182BWHXL0025CS	80076-840	DuPont™ Tyvek® IsoClean® Coverall	9
IC182BWH2X0025CS	80076-842	DuPont™ Tyvek® IsoClean® Coverall	9
IC182BWH3X0025CS	80076-844	DuPont™ Tyvek® IsoClean® Coverall	9
IC182BWH4X0025CS	80077-048	DuPont™ Tyvek® IsoClean® Coverall	9
IC182BWHSM00250C	80076-772	DuPont™ Tyvek® IsoClean® Coverall	9
IC182BWHMD00250C	80076-774	DuPont™ Tyvek® IsoClean® Coverall	9
IC182BWHLG00250C	80076-776	DuPont™ Tyvek® IsoClean® Coverall	9
IC182BWHXL00250C	80077-778	DuPont™ Tyvek® IsoClean® Coverall	9
IC182BWH2X00250C	80076-782	DuPont™ Tyvek® IsoClean® Coverall	9
IC182BWH3X00250C	89129-630	DuPont™ Tyvek® IsoClean® Coverall	9
IC182BWH4X00250C	89129-634	DuPont™ Tyvek® IsoClean® Coverall	9
IC182BWHSM002500	89129-638	DuPont™ Tyvek® IsoClean® Coverall	9
IC182BWHMD002500	89129-636	DuPont™ Tyvek® IsoClean® Coverall	9
IC182BWHLG002500	80078-278	DuPont™ Tyvek® IsoClean® Coverall	9
IC182BWHXL002500	80076-280	DuPont™ Tyvek® IsoClean® Coverall	9
IC182BWH2X002500	89129-628	DuPont™ Tyvek® IsoClean® Coverall	9
IC182BWH3X002500	80077-284	DuPont™ Tyvek® IsoClean® Coverall	9
IC182BWH4X002500	89129-632	DuPont™ Tyvek® IsoClean® Coverall	9
IC224SWHSM00300B	89127-196	DuPont™ Tyvek® IsoClean® Lab Coat	10
IC224SWHMD00300B	89125-612	DuPont™ Tyvek® IsoClean® Lab Coat	10
IC224SWHLG00300B	89127-194	DuPont™ Tyvek® IsoClean® Lab Coat	10
IC224SWHXL00300B	89125-614	DuPont™ Tyvek® IsoClean® Lab Coat	10
IC224SWH2X00300B	89127-190	DuPont™ Tyvek® IsoClean® Lab Coat	10
IC226SWHSM00300B	89127-204	DuPont™ Tyvek® IsoClean® Smock	10
IC226SWHMD00300B	89127-202	DuPont™ Tyvek® IsoClean® Smock	10
IC226SWHLG00300B	89127-200	DuPont™ Tyvek® IsoClean® Smock	10
IC226SWHXL00300B	89127-206	DuPont™ Tyvek® IsoClean® Smock	9
IC253BWHSM0025CS	89127-240	DuPont™ Tyvek® IsoClean® Coverall	9
IC253BWHMD0025CS	89127-236	DuPont™ Tyvek® IsoClean® Coverall	9
IC253BWHLG0025CS	89125-616	DuPont™ Tyvek® IsoClean® Coverall	9
IC253BWHXL0025CS	89127-246	DuPont™ Tyvek® IsoClean® Coverall	9
IC253BWH2X0025CS	89127-212	DuPont™ Tyvek® IsoClean® Coverall	9
IC253BWH3X0025CS	89127-218	DuPont™ Tyvek® IsoClean® Coverall	9
IC253BWH4X0025CS	89127-224	DuPont™ Tyvek® IsoClean® Coverall	9
IC253BWH5X0025CS	89127-226	DuPont™ Tyvek® IsoClean® Coverall	9
IC253BWHSM00250B	89129-656	DuPont™ Tyvek® IsoClean® Coverall	9
IC253BWHMD00250B	89129-654	DuPont™ Tyvek® IsoClean® Coverall	9
IC253BWHLG00250B	89129-652	DuPont™ Tyvek® IsoClean® Coverall	9
IC253BWHXL00250B	89129-660	DuPont™ Tyvek® IsoClean® Coverall	9

Catalog Number Index

DuPont® Catalog #	VWR Catalog #	Description	Page #
IC253BWH2X0025OB	89129-640	DuPont™ Tyvek® IsoClean® Coverall	9
IC253BWH3X0025OB	89129-642	DuPont™ Tyvek® IsoClean® Coverall	9
IC253BWH4X0025OB	89129-644	DuPont™ Tyvek® IsoClean® Coverall	9
IC253BWH5X0025OB	89129-646	DuPont™ Tyvek® IsoClean® Coverall	9
IC253BWHSM0025OC	89129-658	DuPont™ Tyvek® IsoClean® Coverall	9
IC253BWHMD0025OC	89127-232	DuPont™ Tyvek® IsoClean® Coverall	9
IC253BWHLG0025OC	89127-228	DuPont™ Tyvek® IsoClean® Coverall	9
IC253BWHXL0025OC	89127-242	DuPont™ Tyvek® IsoClean® Coverall	9
IC253BWH2X0025OC	89127-208	DuPont™ Tyvek® IsoClean® Coverall	9
IC253BWH3X0025OC	89127-214	DuPont™ Tyvek® IsoClean® Coverall	9
IC253BWH4X0025OC	89127-220	DuPont™ Tyvek® IsoClean® Coverall	9
IC253BWH5X0025OC	89129-648	DuPont™ Tyvek® IsoClean® Coverall	9
IC253BWHSM0025OS	89127-238	DuPont™ Tyvek® IsoClean® Coverall	9
IC253BWHMD0025OS	89127-234	DuPont™ Tyvek® IsoClean® Coverall	9
IC253BWHLG0025OS	89127-230	DuPont™ Tyvek® IsoClean® Coverall	9
IC253BWHXL0025OS	89127-244	DuPont™ Tyvek® IsoClean® Coverall	9
IC253BWH2X0025OS	89127-210	DuPont™ Tyvek® IsoClean® Coverall	9
IC253BWH3X0025OS	89127-216	DuPont™ Tyvek® IsoClean® Coverall	9
IC253BWH4X0025OS	89127-222	DuPont™ Tyvek® IsoClean® Coverall	9
IC253BWH5X0025OS	89121-650	DuPont™ Tyvek® IsoClean® Coverall	9
IC253BWHSM0025CS	89127-246	DuPont™ Tyvek® IsoClean® Coverall	9
IC253BWHMD0025CS	89127-236	DuPont™ Tyvek® IsoClean® Coverall	9
IC253BWHLG0025CS	89125-616	DuPont™ Tyvek® IsoClean® Coverall	9
IC253BWHXL0025CS	89127-246	DuPont™ Tyvek® IsoClean® Coverall	9
IC253BWH2X0025CS	89127-212	DuPont™ Tyvek® IsoClean® Coverall	9
IC253BWH3X0025CS	89127-218	DuPont™ Tyvek® IsoClean® Coverall	9
IC253BWH4X0025CS	89127-224	DuPont™ Tyvek® IsoClean® Coverall	9
IC254BWHSM0025CS	89129-672	DuPont™ Tyvek® IsoClean® Coverall	9
IC254BWHMD0025CS	89129-670	DuPont™ Tyvek® IsoClean® Coverall	9
IC254BWHLG0025CS	89129-668	DuPont™ Tyvek® IsoClean® Coverall	9
IC254BWHXL0025CS	89129-674	DuPont™ Tyvek® IsoClean® Coverall	9
IC254BWH2X0025CS	89129-662	DuPont™ Tyvek® IsoClean® Coverall	9
IC254BWH3X0025CS	89129-664	DuPont™ Tyvek® IsoClean® Coverall	9
IC254BWH4X0025CS	89129-666	DuPont™ Tyvek® IsoClean® Coverall	9
IC258SWHSM0025OB	89127-266	DuPont™ Tyvek® IsoClean® Coverall	9
IC258SWHMD0025OB	89127-264	DuPont™ Tyvek® IsoClean® Coverall	9
IC258SWHLG0025OB	89127-260	DuPont™ Tyvek® IsoClean® Coverall	9
IC258SWHXL0025OB	89125-618	DuPont™ Tyvek® IsoClean® Coverall	9
IC258SWH2X0025OB	89127-248	DuPont™ Tyvek® IsoClean® Coverall	9
IC258SWH3X0025OB	89127-252	DuPont™ Tyvek® IsoClean® Coverall	9
IC258SWH4X0025OB	89127-256	DuPont™ Tyvek® IsoClean® Coverall	9
IC258SWHSM0025OC	89127-268	DuPont™ Tyvek® IsoClean® Coverall	9
IC258SWHMD0025OC	89129-676	DuPont™ Tyvek® IsoClean® Coverall	9
IC258SWHLG0025OC	89127-262	DuPont™ Tyvek® IsoClean® Coverall	9
IC258SWHXL0025OC	89127-270	DuPont™ Tyvek® IsoClean® Coverall	9
IC258SWH2X0025OC	89127-250	DuPont™ Tyvek® IsoClean® Coverall	9
IC258SWH3X0025OC	89127-254	DuPont™ Tyvek® IsoClean® Coverall	9
IC258SWH4X0025OC	89127-258	DuPont™ Tyvek® IsoClean® Coverall	9
IC262SWHSM0030OB	89127-290	DuPont™ Tyvek® IsoClean® Frock	10
IC262SWHMD0030OB	89127-286	DuPont™ Tyvek® IsoClean® Frock	10
IC262SWHLG0030OB	89127-282	DuPont™ Tyvek® IsoClean® Frock	10
IC262SWHXL0030OB	89127-292	DuPont™ Tyvek® IsoClean® Frock	10

Catalog Number Index

DuPont® Catalog #	VWR Catalog #	Description	Page #
IC262SWH2X00300B	89127-272	DuPont™ Tyvek® IsoClean® Frock	10
IC262SWH3X00300B	89127-276	DuPont™ Tyvek® IsoClean® Frock	10
IC262SWH4X00300B	89127-280	DuPont™ Tyvek® IsoClean® Frock	10
IC262SWHMD00300S	89127-288	DuPont™ Tyvek® IsoClean® Frock	10
IC262SWHLG00300S	89127-284	DuPont™ Tyvek® IsoClean® Frock	10
IC262SWHXL00300S	89127-294	DuPont™ Tyvek® IsoClean® Frock	10
IC262SWH2X00300S	89127-274	DuPont™ Tyvek® IsoClean® Frock	10
IC262SWH3X00300S	89127-278	DuPont™ Tyvek® IsoClean® Frock	10
IC263SWHSM00300B	89127-304	DuPont™ Tyvek® IsoClean® Frock	10
IC263SWHMD00300B	89125-620	DuPont™ Tyvek® IsoClean® Frock	10
IC263SWHLG00300B	89127-302	DuPont™ Tyvek® IsoClean® Frock	10
IC263SWHXL00300B	89125-622	DuPont™ Tyvek® IsoClean® Frock	10
IC263SWH2X00300B	89127-296	DuPont™ Tyvek® IsoClean® Frock	10
IC263SWH3X00300B	89127-298	DuPont™ Tyvek® IsoClean® Frock	10
IC263SWH4X00300B	89127-300	DuPont™ Tyvek® IsoClean® Frock	10
IC264SWHSM00300B	89127-314	DuPont™ Tyvek® IsoClean® Frock	10
IC264SWHMD00300B	89125-624	DuPont™ Tyvek® IsoClean® Frock	10
IC264SWHLG00300B	89127-310	DuPont™ Tyvek® IsoClean® Frock	10
IC264SWHXL00300B	89125-626	DuPont™ Tyvek® IsoClean® Frock	10
IC264SWH2X00300B	89127-306	DuPont™ Tyvek® IsoClean® Frock	10
IC270BWHSM00300CS	80056-846	DuPont™ Tyvek® IsoClean® Frock	10
IC270BWHMD00300CS	80076-848	DuPont™ Tyvek® IsoClean® Frock	10
IC270BWHLG00300CS	80076-850	DuPont™ Tyvek® IsoClean® Frock	10
IC270BWHXL00300CS	80076-852	DuPont™ Tyvek® IsoClean® Frock	10
IC270BWH2X00300CS	80076-854	DuPont™ Tyvek® IsoClean® Frock	10
IC270BWH3X00300CS	89129-678	DuPont™ Tyvek® IsoClean® Frock	10
IC270BWH4X00300CS	89129-680	DuPont™ Tyvek® IsoClean® Frock	10
IC270BWHSM00300C	89125-632	DuPont™ Tyvek® IsoClean® Frock	10
IC270BWHMD00300C	80076-800	DuPont™ Tyvek® IsoClean® Frock	10
IC270BWHLG00300C	80076-802	DuPont™ Tyvek® IsoClean® Frock	10
IC270BWHXL00300C	80076-804	DuPont™ Tyvek® IsoClean® Frock	10
IC270BWH2X00300C	80076-806	DuPont™ Tyvek® IsoClean® Frock	10
IC270BWH3X00300C	80077-074	DuPont™ Tyvek® IsoClean® Frock	10
IC270BWH4X00300C	89127-318	DuPont™ Tyvek® IsoClean® Frock	10
IC270BWHSM00300O	89125-630	DuPont™ Tyvek® IsoClean® Frock	10
IC270BWHMD00300O	80077-064	DuPont™ Tyvek® IsoClean® Frock	10
IC270BWHLG00300O	80077-066	DuPont™ Tyvek® IsoClean® Frock	10
IC270BWHXL00300O	89125-634	DuPont™ Tyvek® IsoClean® Frock	10
IC270BWH2X00300O	89125-628	DuPont™ Tyvek® IsoClean® Frock	10
IC270BWH3X00300O	80077-056	DuPont™ Tyvek® IsoClean® Frock	10
IC270BWH4X00300O	80077-266	DuPont™ Tyvek® IsoClean® Frock	10
IC444SWHMD02000B	13452-162	DuPont™ Tyvek® IsoClean® Boot Cover	11
IC444SWHLG02000B	13452-164	DuPont™ Tyvek® IsoClean® Boot Cover	11
IC444SWHXL02000B	13452-166	DuPont™ Tyvek® IsoClean® Boot Cover	11
IC446SWHMD0100CS	80076-874	DuPont™ Tyvek® IsoClean® Boot Cover	11
IC446SWHLG0100CS	80076-876	DuPont™ Tyvek® IsoClean® Boot Cover	11
IC446SWHXL0100CS	80076-878	DuPont™ Tyvek® IsoClean® Boot Cover	11
IC446SWHMD0100C	80076-826	DuPont™ Tyvek® IsoClean® Boot Cover	11
IC446SWHLG0100C	80076-828	DuPont™ Tyvek® IsoClean® Boot Cover	11
IC446SWHXL0100C	80076-830	DuPont™ Tyvek® IsoClean® Boot Cover	11
IC446SWHMD0100O	80076-760	DuPont™ Tyvek® IsoClean® Boot Cover	11
IC446SWHLG0100O	80076-762	DuPont™ Tyvek® IsoClean® Boot Cover	11

Catalog Number Index

DuPont® Catalog #	VWR Catalog #	Description	Page #
IC446SWHXL010000	80076-764	DuPont™ Tyvek® IsoClean® Boot Cover	11
IC451SWHMD01000B	89127-322	DuPont™ Tyvek® IsoClean® Shoe Cover	11
IC451SWHLG01000B	89127-320	DuPont™ Tyvek® IsoClean® Shoe Cover	11
IC451SWHXL01000B	89129-682	DuPont™ Tyvek® IsoClean® Shoe Cover	11
IC457SWHSM01000B	89128-796	DuPont™ Tyvek® IsoClean® Boot Cover	11
IC457SWHMD01000B	89127-326	DuPont™ Tyvek® IsoClean® Boot Cover	11
IC457SWHLG01000B	89125-636	DuPont™ Tyvek® IsoClean® Boot Cover	11
IC457SWHXL01000B	89127-330	DuPont™ Tyvek® IsoClean® Boot Cover	11
IC457SWHSM01000S	89125-638	DuPont™ Tyvek® IsoClean® Boot Cover	11
IC457SWHMD01000S	89127-328	DuPont™ Tyvek® IsoClean® Boot Cover	11
IC457SWHLG01000S	89127-324	DuPont™ Tyvek® IsoClean® Boot Cover	11
IC457SWHXL01000S	89127-332	DuPont™ Tyvek® IsoClean® Boot Cover	11
IC458BWHMD0100CS	89127-340	DuPont™ Tyvek® IsoClean® Boot Cover	11
IC458BWHLG0100CS	89127-336	DuPont™ Tyvek® IsoClean® Boot Cover	11
IC458BWHXL0100CS	89129-686	DuPont™ Tyvek® IsoClean® Boot Cover	11
IC458BWHMD01000B	89127-338	DuPont™ Tyvek® IsoClean® Boot Cover	11
IC458BWHLG01000B	89125-640	DuPont™ Tyvek® IsoClean® Boot Cover	11
IC458BWHXL01000B	89125-642	DuPont™ Tyvek® IsoClean® Boot Cover	11
IC458BWHMD01000C	89129-684	DuPont™ Tyvek® IsoClean® Boot Cover	11
IC458BWHLG01000C	89127-334	DuPont™ Tyvek® IsoClean® Boot Cover	11
IC458BWHXL01000C	89127-342	DuPont™ Tyvek® IsoClean® Boot Cover	11
IC461SWHSM03000B	89127-346	DuPont™ Tyvek® IsoClean® Shoe Cover	11
IC461SWHMD03000B	89127-344	DuPont™ Tyvek® IsoClean® Shoe Cover	11
IC461SWHLG03000B	89125-644	DuPont™ Tyvek® IsoClean® Shoe Cover	11
IC461SWHXL03000B	89127-348	DuPont™ Tyvek® IsoClean® Shoe Cover	11
IC501BWH000100CS	89127-354	DuPont™ Tyvek® IsoClean® Sleeves	10
IC501BWH0001000B	89127-350	DuPont™ Tyvek® IsoClean® Sleeves	10
IC501BWH0001000C	89127-352	DuPont™ Tyvek® IsoClean® Sleeves	10
IC501BWH0001000S	89185-646	DuPont™ Tyvek® IsoClean® Sleeves	10
IC666BWHMD0100CS	80076-876	DuPont™ Tyvek® IsoClean® Hood	10
IC666BWHLG0100CS	80076-866	DuPont™ Tyvek® IsoClean® Hood	10
IC666BWHMD01000C	89129-692	DuPont™ Tyvek® IsoClean® Hood	10
IC666BWHLG01000C	80076-818	DuPont™ Tyvek® IsoClean® Hood	10
IC666BWHMD010000	89129-690	DuPont™ Tyvek® IsoClean® Hood	10
IC666BWHLG010000	89129-688	DuPont™ Tyvek® IsoClean® Hood	10
IC668BWH000100CS	89125-650	DuPont™ Tyvek® IsoClean® Hood	10
IC668BWH0001000B	89125-648	DuPont™ Tyvek® IsoClean® Hood	10
IC668BWH0001000C	89127-356	DuPont™ Tyvek® IsoClean® Hood	10
IC701SWHMD003000	80076-996	DuPont™ Tyvek® IsoClean® Gown	10
IC704SWH0000300B	89128-776	DuPont™ Tyvek® IsoClean® Apron	10
IC729SWH000250CS	89127-360	DuPont™ Tyvek® IsoClean® Bouffant	10
IC729SWH0002500B	89125-652	DuPont™ Tyvek® IsoClean® Bouffant	10
IC729SWH0002500C	89127-358	DuPont™ Tyvek® IsoClean® Bouffant	10
IC7310BU0003000S	89129-694	DuPont™ Tyvek® IsoClean® Mask	11
ML7300WH000250BB	89129-696	DuPont™ Sierra™ Anti-fog Mask	15
ML7300WH000250BH	80076-668	DuPont™ Sierra™ Anti-fog Mask	15
ML7300WH0002500S	80076-676	DuPont™ Sierra™ Anti-fog Mask	15
ML7310BU000300BB	80076-968	DuPont™ Sierra™ Comfort Mask	15
ML7330BU000300BB	80076-670	DuPont™ Sierra™ General Mask	15
ML7330BU000500BH	10010-386	DuPont™ Sierra™ General Mask	15
ML7360WH0002500BH	80076-672	DuPont™ Sierra™ Controlled Environment Mask	15
ML7360WH00025000S	80076-678	DuPont™ Sierra™ Controlled Environment Mask	15

Catalog Number Index

DuPont® Catalog #	VWR Catalog #	Description	Page #
ML737OWH000250BH	89129-698	DuPont® Sierra™ Anti-fog Mask	15
ML737OWH0002500S	80076-680	DuPont® Sierra™ Anti-fog Mask	15
ML739OWH000300BH	80076-982	DuPont® Sierra™ Controlled Environment Mask	15
PC122SWHSM00250B	89129-700	DuPont® ProClean® Coverall	13
PC122SWHMD00250B	13451-186	DuPont® ProClean® Coverall	13
PC122SWHLG00250B	13451-184	DuPont® ProClean® Coverall	13
PC122SWHXL00250B	13451-188	DuPont® ProClean® Coverall	13
PC122SWH2X00250B	13451-190	DuPont® ProClean® Coverall	13
PC122SWH3X00250B	13451-192	DuPont® ProClean® Coverall	13
PC122SWH4X00250B	13451-194	DuPont® ProClean® Coverall	13
PC143SWHSM00250B	13451-200	DuPont® ProClean® Coverall	13
PC143SWHMD00250B	13451-198	DuPont® ProClean® Coverall	13
PC143SWHLG00250B	13451-196	DuPont® ProClean® Coverall	13
PC143SWHXL00250B	13451-202	DuPont® ProClean® Coverall	13
PC143SWH2X00250B	13451-204	DuPont® ProClean® Coverall	13
PC143SWH3X00250B	13451-206	DuPont® ProClean® Coverall	13
PC143SWH4X00250B	13451-208	DuPont® ProClean® Coverall	13
PC270SWHSM00300B	13452-502	DuPont® ProClean® Frock	13
PC270SWHMD00300B	13452-504	DuPont® ProClean® Frock	13
PC270SWHLG00300B	13452-506	DuPont® ProClean® Frock	13
PC270SWHXL00300B	13452-508	DuPont® ProClean® Frock	13
PC270SWH2X00300B	89129-702	DuPont® ProClean® Frock	13
PC270SWH3X00300B	13452-512	DuPont® ProClean® Frock	13
PC270SWH4X00300B	13452-514	DuPont® ProClean® Frock	13
PC271SWHSM00300B	89129-704	DuPont® ProClean® Frock	13
PC271SWHMD00300B	13452-544	DuPont® ProClean® Frock	13
PC271SWHLG00300B	13452-546	DuPont® ProClean® Frock	13
PC271SWHXL00300B	13452-548	DuPont® ProClean® Frock	13
PC271SWH2X00300B	13452-550	DuPont® ProClean® Frock	13
PC271SWH3X00300B	13452-552	DuPont® ProClean® Frock	13
PC271SWH4X00300B	13452-554	DuPont® ProClean® Frock	13
PC444SWHMD01000B	13451-212	DuPont® ProClean® Boot Cover	13
PC444SWHLG01000B	13451-210	DuPont® ProClean® Boot Cover	13
PC444SWHXL01000B	13451-216	DuPont® ProClean® Boot Cover	13
PC500SWH0002000B	13452-572	DuPont® ProClean® Sleeve	13
PC663SWH0001000B	13452-580	DuPont® ProClean® Hood	13
PE440SBULG020000	80076-704	DuPont® SureStep™/DuPont® Dura-Track™ Shoe Cover	14
PE440SBUXL020000	80076-705	DuPont® SureStep™/DuPont® Dura-Track™ Shoe Cover	14
PE440SWHLG0200CT	80076-976	DuPont® SureStep™/DuPont® Dura-Track™ Shoe Cover	14
PE440SWHXL0200CT	89129-706	DuPont® SureStep™/DuPont® Dura-Track™ Shoe Cover	14
PE440SWHLG020000	80076-700	DuPont® SureStep™/DuPont® Dura-Track™ Shoe Cover	14
PE440SWHXL020000	80076-702	DuPont® SureStep™/DuPont® Dura-Track™ Shoe Cover	14
PE444SWHLG010000	89129-708	DuPont® SureStep™/DuPont® Dura-Track™ Boot Cover	14
PE444SWHXL010000	80077-260	DuPont® SureStep™/DuPont® Dura-Track™ Boot Cover	14
PP701FWH00005000	80076-718	DuPont® General Purpose Gown	16
PP7400WHO00150BH	80076-682	DuPont® General Purpose Cleanroom Face Veil	16
PP7410WHO00150BH	89129-710	DuPont® General Purpose Cleanroom Face Veil	16
QC500BYL0002000B	13452-680	DuPont® General Purpose Sleeve	16
SR144BBUSM002500	89129-724	DuPont® Suprel™ LS Coverall	12
SR144BBUMD002500	89129-722	DuPont® Suprel™ LS Coverall	12
SR144BBULG002500	89129-720	DuPont® Suprel™ LS Coverall	12
SR144BBUXL002500	89129-726	DuPont® Suprel™ LS Coverall	12

Catalog Number Index

DuPont® Catalog #	VWR Catalog #	Description	Page #
SR144BBU2X002500	89129-712	DuPont® Suprel™ LS Coverall	12
SR144BBU3X002500	89129-714	DuPont® Suprel™ LS Coverall	12
SR144BBU4X002500	89129-716	DuPont® Suprel™ LS Coverall	12
SR144BBU5X002500	89129-717	DuPont® Suprel™ LS Coverall	12
SR144BWHSM002500	89129-730	DuPont® Suprel™ LS Coverall	12
SR144BWHMD002500	89127-368	DuPont® Suprel™ LS Coverall	12
SR144BWHLG002500	89125-654	DuPont® Suprel™ LS Coverall	12
SR144BWHXL002500	89127-370	DuPont® Suprel™ LS Coverall	12
SR144BWH2X002500	89127-362	DuPont® Suprel™ LS Coverall	12
SR144BWH3X002500	89127-364	DuPont® Suprel™ LS Coverall	12
SR144BWH4X002500	89127-366	DuPont® Suprel™ LS Coverall	12
SR144BWH5X002500	89129-728	DuPont® Suprel™ LS Coverall	12
SR180SWHSM002500	89129-736	DuPont® Suprel™ LS Coverall	12
SR180SWHMD002500	89065-166	DuPont® Suprel™ LS Coverall	12
SR180SWHLG002500	89065-168	DuPont® Suprel™ LS Coverall	12
SR180SWHXL002500	89065-170	DuPont® Suprel™ LS Coverall	12
SR180SWH2X002500	89129-732	DuPont® Suprel™ LS Coverall	12
SR180SWH3X002500	89065-174	DuPont® Suprel™ LS Coverall	12
SR180SWH4X002500	89129-734	DuPont® Suprel™ LS Coverall	12
SR181SBUSM002500	89068-976	DuPont® Suprel™ LS Coverall	12
SR181SBUMD002500	89068-978	DuPont® Suprel™ LS Coverall	12
SR181SBULG002500	89068-980	DuPont® Suprel™ LS Coverall	12
SR181SBUXL002500	89068-982	DuPont® Suprel™ LS Coverall	12
SR181SBU2X002500	89068-984	DuPont® Suprel™ LS Coverall	12
SR181SBU3X002500	89129-738	DuPont® Suprel™ LS Coverall	12
SR181SBU4X002500	89129-738	DuPont® Suprel™ LS Coverall	12
SR181SWHSM002500	89065-190	DuPont® Suprel™ LS Coverall	12
SR181SWHMD002500	89065-192	DuPont® Suprel™ LS Coverall	12
SR181SWHLG002500	89065-194	DuPont® Suprel™ LS Coverall	12
SR181SWHXL002500	89065-196	DuPont® Suprel™ LS Coverall	12
SR181SWH2X002500	89065-198	DuPont® Suprel™ LS Coverall	12
SR181SWH3X002500	89065-200	DuPont® Suprel™ LS Coverall	12
SR181SWH4X002500	89065-202	DuPont® Suprel™ LS Coverall	12
SR181SWHSM00250S	89129-748	DuPont® Suprel™ LS Coverall	12
SR181SWHMD00250S	89065-074	DuPont® Suprel™ LS Coverall	12
SR181SWHLG00250S	89129-746	DuPont® Suprel™ LS Coverall	12
SR181SWHXL00250S	89065-078	DuPont® Suprel™ LS Coverall	12
SR181SWH2X00250S	89129-742	DuPont® Suprel™ LS Coverall	12
SR181SWH3X00250S	89065-082	DuPont® Suprel™ LS Coverall	12
SR181SWH4X00250S	89129-744	DuPont® Suprel™ LS Coverall	12
SR219SBUSM003000	89068-954	DuPont® Suprel™ LS Lab Coat	12
SR219SBUMD003000	89068-956	DuPont® Suprel™ LS Lab Coat	12
SR219SBULG003000	89068-958	DuPont® Suprel™ LS Lab Coat	12
SR219SBUXL003000	89068-960	DuPont® Suprel™ LS Lab Coat	12
SR219SBU2X003000	89068-962	DuPont® Suprel™ LS Lab Coat	12
SR219SBU3X003000	89068-964	DuPont® Suprel™ LS Lab Coat	12
SR219SBU4X003000	89068-966	DuPont® Suprel™ LS Lab Coat	12
SR219SWHSM003000	89065-138	DuPont® Suprel™ LS Lab Coat	12
SR219SWHMD003000	89065-140	DuPont® Suprel™ LS Lab Coat	12
SR219SWHLG003000	89065-142	DuPont® Suprel™ LS Lab Coat	12
SR219SWHXL003000	89065-144	DuPont® Suprel™ LS Lab Coat	12
SR219SWH2X003000	89065-146	DuPont® Suprel™ LS Lab Coat	12

Catalog Number Index

DuPont® Catalog #	VWR Catalog #	Description	Page #
SR219SWH3X003000	89065-148	DuPont™ Suprel™ LS Lab Coat	12
SR219SWH4X003000	89065-150	DuPont™ Suprel™ LS Lab Coat	12
SR267SWHSM003000	89065-152	DuPont™ Suprel™ LS Frock	12
SR267SWHMD003000	89065-154	DuPont™ Suprel™ LS Frock	12
SR267SWHLG003000	89065-156	DuPont™ Suprel™ LS Frock	12
SR267SWHXL003000	89065-158	DuPont™ Suprel™ LS Frock	12
SR267SWH2X003000	89065-160	DuPont™ Suprel™ LS Frock	12
SR267SWH3X003000	89065-162	DuPont™ Suprel™ LS Frock	12
SR267SWH4X003000	89065-164	DuPont™ Suprel™ LS Frock	12
SR267SWHSM00300S	89065-044	DuPont™ Suprel™ LS Frock	12
SR267SWHMD00300S	89065-046	DuPont™ Suprel™ LS Frock	12
SR267SWHLG00300S	89065-048	DuPont™ Suprel™ LS Frock	12
SR267SWHXL00300S	89129-752	DuPont™ Suprel™ LS Frock	12
SR267SWH2X00300S	89065-052	DuPont™ Suprel™ LS Frock	12
SR267SWH3X00300S	89129-750	DuPont™ Suprel™ LS Frock	12
SR267SWH4X00300S	89065-056	DuPont™ Suprel™ LS Frock	12
SR271SBUSM003000	89129-762	DuPont™ Suprel™ LS Frock	12
SR271SBUMD003000	89129-760	DuPont™ Suprel™ LS Frock	12
SR271SBULG003000	89129-758	DuPont™ Suprel™ LS Frock	12
SR271SBUXL003000	89129-764	DuPont™ Suprel™ LS Frock	12
SR271SBU2X003000	89129-754	DuPont™ Suprel™ LS Frock	12
SR271SBU3X003000	89069-000	DuPont™ Suprel™ LS Frock	12
SR271SBU4X003000	89129-756	DuPont™ Suprel™ LS Frock	12
SR271SWHSM003000	89065-204	DuPont™ Suprel™ LS Frock	12
SR271SWHMD003000	89065-206	DuPont™ Suprel™ LS Frock	12
SR271SWHLG003000	89065-208	DuPont™ Suprel™ LS Frock	12
SR271SWHXL003000	89065-210	DuPont™ Suprel™ LS Frock	12
SR271SWH2X003000	89065-212	DuPont™ Suprel™ LS Frock	12
SR271SWH3X003000	89065-214	DuPont™ Suprel™ LS Frock	12
SR271SWH4X003000	89065-216	DuPont™ Suprel™ LS Frock	12
SR271SWHSM00300S	89065-086	DuPont™ Suprel™ LS Frock	12
SR271SWHMD00300S	89065-088	DuPont™ Suprel™ LS Frock	12
SR271SWHLG00300S	89065-090	DuPont™ Suprel™ LS Frock	12
SR271SWHXL00300S	89065-092	DuPont™ Suprel™ LS Frock	12
SR271SWH2X00300S	89065-094	DuPont™ Suprel™ LS Frock	12
SR271SWH3X00300S	89065-096	DuPont™ Suprel™ LS Frock	12
SR271SWH4X00300S	89065-098	DuPont™ Suprel™ LS Frock	12
SR442SWHMD010000	89065-132	DuPont™ Suprel™ LS Shoe Cover	12
SR442SWHLG010000	89065-134	DuPont™ Suprel™ LS Shoe Cover	12
SR442SWHXL010000	89065-136	DuPont™ Suprel™ LS Shoe Cover	12
SR447SBUMD010000	89129-766	DuPont™ Suprel™ LS Boot Cover	12
SR447SBULG010000	89068-972	DuPont™ Suprel™ LS Boot Cover	12
SR447SBUXL010000	89129-768	DuPont™ Suprel™ LS Boot Cover	12
SR447SWHMD01000S	89129-770	DuPont™ Suprel™ LS Boot Cover	12
SR447SWHLG01000S	89065-040	DuPont™ Suprel™ LS Boot Cover	12
SR447SWHXL01000S	89065-042	DuPont™ Suprel™ LS Boot Cover	12
TY273BWH00010000	80080-916	DuPont™ General Purpose Apron	16

LATEX STATEMENT: As of January 1, 2006, DuPont production specifications exclude use of components containing natural rubber latex in the manufacture of DuPont™ Tyvek® IsoClean®, Suprel® LS and ProClean® garments. Notwithstanding, DuPont™ Tyvek® Micro-Clean® 2-1-2 produced by Cardinal Health prior to May 2008 may contain dry crumb natural rubber latex.

DuPont production specifications for Grippe® PVC exclude use of latex. Notwithstanding, DuPont cannot guarantee the absence of latex in these shoe or boot covers.

Anyone who begins to exhibit allergic response during the use of DuPont products should immediately cease using these products. The incident should also be reported to DuPont at 1.800.441.3637.

SILICONE STATEMENT: In the past, DuPont has found that threads and zippers can be the most significant source of silicone oil contamination in garments. DuPont specifies that threads and zippers used in Tyvek® IsoClean®, Suprel® LS and ProClean® garments be manufactured without the use of silicone oils. Notwithstanding, DuPont cannot guarantee the absence of silicone oils on these garments nor can DuPont confirm silicone oil prohibition in DuPont™ Tyvek® Micro-Clean® 2-1-2 produced by Cardinal Health prior to May 2008.

For end users with concerns about contamination with silicone oils or any other contaminants, the best practice is to audit inbound materials, including garments, for those contaminants.

This information is based upon technical data that DuPont believes reliable. It is subject to revision as additional knowledge and experience are gained. DuPont makes no guarantee of results and assumes no obligation or liability in connection with this information. It is the user's responsibility to determine the level of toxicity and the proper personal protective equipment needed. The information set forth herein reflects laboratory performance of fabrics, not complete garments, under controlled conditions. It is intended for information use by persons having technical skill for evaluation under the specific end-use conditions, at their own discretion and risk.

Anyone intending to use this information should first verify that the garment selected is suitable for the intended use. In many cases, seams and closures may provide less barrier than the fabric. If the fabric becomes torn, abraded or punctured, end user should discontinue use of garment to avoid compromising the barrier protection. **SINCE CONDITIONS OF USE ARE OUTSIDE OUR CONTROL, WE MAKE NO WARRANTIES, EXPRESSED OR IMPLIED, INCLUDING WITHOUT LIMITATION, NO WARRANTIES OF MERCHANTABILITY OR FITNESS FOR A PARTICULAR USE AND ASSUME NO LIABILITY IN CONNECTION WITH ANY USE OF THIS INFORMATION.** This information is not intended as a license to operate under or a recommendation to infringe any patent, trademark or technical information of DuPont or others covering any material or its use.

WARNINGS: 1) DuPont garments and accessories for controlled environments are not flame-resistant and should not be used around heat, flame, sparks or in potentially flammable or explosive environments. **2)** Garments made of Tyvek® should have slip-resistant or anti-slip materials on the outer surface of boots, shoe covers or other garment surfaces in conditions where slipping could occur.

Copyright © 2009 DuPont. The DuPont Oval Logo, DuPont™, The miracles of science™, Advanced Composite Technology™, Dura-Trac™, Grippe™, IsoClean®, Micro-Clean®, ProClean®, Sierra®, Suprel®, SureStep™, Tychem™ and Tyvek® are registered trademarks or trademarks of E.I. du Pont de Nemours and Company or its affiliates. All rights reserved.

The VWR logo is a trademark of VWR International, Inc. All rights reserved.

VWR International
1310 Goshen Parkway
West Chester, PA 19380
Orders: 1.800.932.5000
Customer Service: 1.800.932.5000
Internet Help Desk: 1.888.897.5463



Prices, product appearance and specifications are current at the time of printing, subject to change without notice. Availability for certain products may be limited by federal, state, provincial or local licensing requirements. VWR makes no claims or warranties concerning sustainable/green products. Any claims concerning sustainable/green products are the sole claims of the manufacturer and not those of VWR International, LLC. All prices are in U.S. dollars unless otherwise noted. Offers valid in USA and Canada, void where prohibited by law or company policy, while supplies last. Visit vwr.com to view our privacy policy and additional disclaimers.

VWR, forms of VWR, and the VWR logo and/or design are either registered trademarks ®, trademarks ™, or service marks ℠ of VWR International, LLC in the United States and/or other countries. All other marks referenced herein are registered trademarks, trademarks or service marks of their respective owner(s). For a complete list of trademark owners please visit vwr.com.

